



The CHALLENGAIR 9000II Animal Dryer Instruction Manual

Dryer and stand assembly: The stand tube assembly is pre-assembled and wrapped in paper. The stand tube assembly is compressed and held in position by the center clamp. Loosen the handle on the clamp and allow the spring to extend the tube assembly. Place the end of the larger outer tube down into the center of the stand base. Twist and push down firmly (see ref # 45,49). On the dryer head assembly, move the yoke to a 90-degree angle to the dryer. Lift the dryer and position over the assembled stand and slide the tube of the yoke into the upper stand tube (see ref #14, 48). With clamping handle still loose, raise or lower dryer to desired height and tighten stand adjustment handle as explained in the next paragraph. (see ref # 18).

Stand height Adjustment and dryer angle adjustment: Your dryer has "ratchet" type adjustment handles on the stand and the dryer. To tighten an adjustment handle, turn the handle clockwise as far as is comfortable. As necessary, for additional tightening, pull the handle out to disengage the "ratchet" and while keeping the handle pulled out, turn the handle counter-clockwise to a suitable position for continued tightening. Release the handle to engage the "ratchet" again and repeat these procedures until the adjustment handle is tight. Reverse the turning direction of these actions to loosen an adjustment handle. **NOZZLE:** The nozzle at the end of the extension arm may be rotated to change the direction of the airflow. Simply rotate nozzle to the desired direction (see ref #21).

Dryer Stand: Your dryer stand has two locking casters to keep the dryer from rolling inadvertently. To lock wheels, press down the small tab on the locking casters. To unlock, lift up on tab (see ref #46). For long life and smoother operation, avoid rolling casters through cut hair that has fallen on the floor.

Optional Attachment: A hose and nozzle kit is available for the Challengair 9000II. To attach the hose to the dryer, insert hose end into the arm extension nozzle. To attach nozzles to the hose, simply push nozzle securely onto the hose end.

Operation- Switches and Controls: Your dryer has a four-position switch. The first position is "OFF", the second position is "ON", which is air only, the third position is "Low Heat" and fourth position is "High Heat".

Limitations - Warranty does not cover shipping or transportation costs. Warranty applies to original purchaser only. Proof of date of purchase is required. Warranty is void if registration card is not mailed within 30 days of purchase or delivery. Warranty does not cover abuse, Accidents, acts of war, dropped product, improper voltage, disassembly or alteration. Disassembly, repair or service by anyone other than Double K Industries or a Double K Industries authorized service center will void the warranty. heated with low heat, and the fourth position is "HI HEAT" which is air heated with maximum heat (see the next paragraph regarding variations in heat).

Air Control: The air volume on your dryer is controlled by the baffle wheel located under the filter on the top of the dryer. Rotate the lever attached to the wheel clockwise to reduce the air and counterclockwise to increase the air volume. (see ref #33) NOTE: The heat will also change as you increase or decrease the air volume, so you may want to adjust the heat setting together with the air volume to achieve the desired combination of air temperature and volume.

Filter Cleaning: The top filter may be cleaned after each use by wiping away hair that is on the filter. The filter must periodically be shaken out, or vacuumed off to remove excessive dirt, hair and dander that is in the filter. The filter may also be washed with water and mild soap. Let dry completely before installing back on the dryer. (Never run dryer without filter in place.)

Cleaning Dryer Interior: Hair and dust will accumulate inside the dryer. Blow clean as needed using a Challengair Forced Air Dryer or suitable high pressure air outlet.

Please read all instructions and safety precautions before operating product! Save for future reference.

Product Specifications:

MODEL: Challengair 9000II **HORSEPOWER:** 1/3 **RPM:** 3450

Important Specifications:

Warning- Important safety precautions! Please read completely before using product! When using electrical appliances, especially when children or pets are present, basic safety precautions should always be followed to reduce the risk of fire, electrical shock and personal injury, including but not limited to the following:

1. Do not leave dryer or animal unattended while product is in use. Check animal regularly during drying.
 2. Unplug dryer when not in use.
 3. Do not use extension cords with dryer.
 4. Do not unplug unit by pulling on cord.
 5. Do not expose dryer to rain or water.
 6. Do not use or store dryer where it can fall or be pulled into tub or sink or standing water.
- IF DRYER FALLS INTO WATER...UNPLUG IT!! DO NOT REACH INTO THE WATER!**
7. Unplug unit before attempting any maintenance or service.
 8. Do not put any object into dryer or dryer openings.
 9. Keep loose clothing, jewelry and hair away from dryer openings.
 10. Do not direct dryer air towards eyes or ears of people or pets.
 11. Never use dryer if it has a damaged cord or plug, if it has been dropped or damaged or exposed to rain or water. Return to manufacturer for service.
 12. This product is for use on animals only.
 13. Recommended operation by adults only. Use caution when working around children.
 14. Do not use attachments not recommended by the manufacturer.
 15. Do not operate without filter in place. Keep filter clean as a dirty filter can limit air intake and may damage the motor or cause overheating.
 16. Plug only into a properly grounded outlet. Always make sure the amperage rating of the electrical outlet is sufficient for the amperage of the product. (Read cover of this manual for the amperage rating of this dryer.)
 17. Do not use product for anything other than its intended use.
 18. Do not attempt to perform any service or maintenance not outlined in this manual. Contact Double K Industries or an authorized service center if additional service is needed.
 19. Do not attempt any product modifications or alterations. Do not use if any part or switch is damaged - send to an authorized Double K Industries service center or Double K Industries for service.
 20. When servicing, use only Double K Industries Parts.

Congratulations! You have just purchased the **Challengair 9000II** Pet Dryer which produces large volumes of warm air under pressure to make all of your grooming tasks easier.

Your new dryer is designed to provide long reliable service.

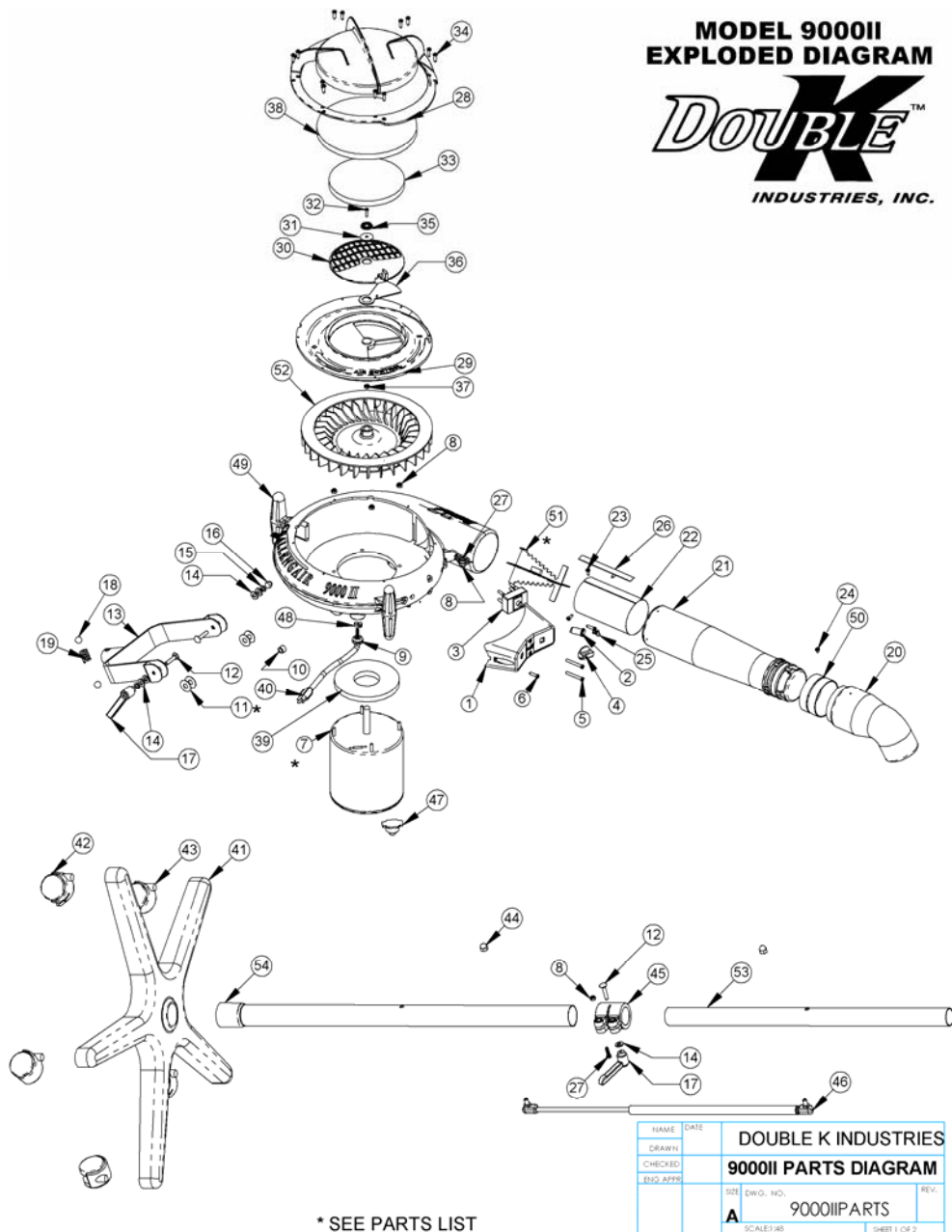
Double K Industries 9711 Mason Avenue Chatsworth, CA 91311
(818) 345-8078 Toll Free: (800) 821-9449 Fax (818) 886-0218

9000II PARTS LIST

ITEM NO.	PART NUMBER	DESCRIPTION	QTY.
1	7009	9000 II SWITCH BOX	1
2	834	LIGHT INDICATOR 125V, 1/3 WATT	1
3	9043	SWITCH ROTARY SP 4 POS. 25 AMP.	1
4	5509	KNOB SWITCH BLACK	1
5	7017	SCREW HI-LO #10-16 X 1-1/2 PHP	2
6	7034	SCREW HI-LO #10-16 X 3/4 PHP	2
7	7002	MOTOR, 115V	1
8	5531	NUT #10-32 UNF NYLON INSERT	6
9	534	GROMMET BLACK	1
10	7030	SPACER UNTHREADED	2
11	7013	WASHER .378 ID X 1.0 OD X .030 THK	4
12	7015	BOLT CARRIAGE 1/4-20 X 1-1/4 LONG	3
13	7011	MOUNTING FORK	1
14	10031	WASHER 1/4 SAE FLAT PLTD	5
15	987	WASHER 1/4 INCH SPLIT LOCK	2
16	7031	NUT ACORN 1/4-20 ZINC PLATED	1
17	7033	HANDLE LEVER ADJUSTABLE 1/4-20 UNC	2
18	7047	BALL 1/2" CHROMED STEEL	2
19	7048	SPRING COMPRESSION	1
20	7007	NOZZLE DIRECTIONAL	1
21	7045	ARM EXTENSION	1
22	7054	SHIELD FOR HEATING ELEMENT	1
23	9003	SCREW #8X1/2 SMS	4
24	443	MODIFIED SCREW #8 x 3/8 SHT METAL PHP	1
25	7035	SCREW FH, ST, 8-32X3/8	1
26	10122	GRAPHITE TAPE .015X1.0	1
27	7019	SCREW #10-32 X 3/4 PHP	2
28	7032	SOUND CAP	1
29	7006-1	9000 II DRYER HOUSING- CUT OUT	1
30	7010	LOUVER 9000 II	1
31	7014	WASHER #10 1" OD FENDER	1
32	9036	SCREW, 6-32X5/8 SLOT PAN M/S	1
33	7029	FILTER INTAKE 5.8 DIA.	1
34	7020	SCREW HI-LO #8-16 X 5/8 PHP	12
35	5538	VELCRO, MVA 8 BLACK VELSTICK	1
36	7055	LOUVER AIR INTAKE EXTENTION	1
37	5533	NUT #6-32 UNF KEPS LOCKING	4
38	7049	9000 II SOUND ABSORBING DISC	1
39	10109	MOTOR FILTER 5.13 DIA	1
40	881	ASSY CORDSET W/ITE 120V 14 FT	1
41	9023	STAND BASE 25" 5 LEG	1
42	9022	CASTER LOCKING 50mm NYLON	2
43	9021	CASTER 50mm BLACK	3
44	808	NUT ACORN 5/16-18 UNC ZINC PLATED	2
45	7003	CLAMP TUBE STAND ADJUSTMENT SLEEVE	1
46	830-1	SPRING GAS, 36" LIFT-O-MAT	1
47	7051	THERMAL SWITCH 110V, MEJ24RB	1
48	877	QUICK TIEWRAP	1
49	7006	9000 II DRYER HOUSING- MAIN	1
50	7046A	ARM EXT. SLEEVE	1
51	7044	115V 9000-II ELEMENT 1390W	1
52	7001	IMPELLER FAN BLADE	1
53	838A	TUBE 1-3/8 OD X 24" LONG .049 WALL	1
54	9020A	TUBE 1-5/8 OD X 30" LONG .049 WALL	1

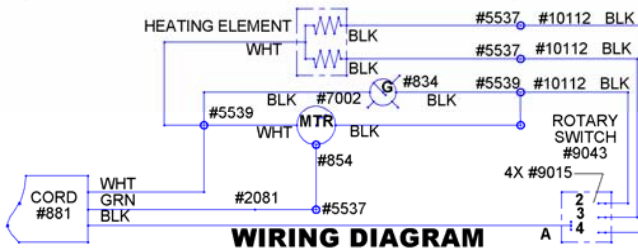
*** NOTES: ALTERNATE PARTS**

ITEM 8	7040	MOTOR 230V/50HZ
ITEM 7	7052	ELEMENT 230V
ITEM 29	7052	ELEMENT 230V
ITEM 43	405	230V CORD EUROPEAN
ITEM 43	403	230V CORD BRITISH
ITEM 43	408	230V CORD AUSTRALIAN
ITEM 53	7051	THERMAL RESET SWITCH
ITEM NA	7053	THERMAL FUSE FOR ELEMENT



**MODEL 9000II
EXPLODED DIAGRAM**

**DOUBLE™
INDUSTRIES, INC.**



NAME	DATE
DRAWN	
CHECKED	
ENG. APPR	
SER	DWG. NO.
A	9000IIPARTS
SCALE: 1:1	SHEET 2 OF 2

NAME	DATE
DRAWN	
CHECKED	
ENG. APPR	
SER	DWG. NO.
A	9000IIPARTS
SCALE: 1:1	SHEET 1 OF 2

* SEE PARTS LIST

TWO YEAR WARRANTY Guarantees - The Challengair 9000II is guaranteed against defects in materials and workmanship for two years from the original date of purchase. Should any component become inoperative due to defects in materials or workmanship during the two year warranty period, Double K Industries will repair the dryer free of charge subject to the limitations below. For warranty service of your Challengair 9000II, please ship PREPAID to Double K Industries or call for the location of your nearest authorized service center

Warranty Limitations: Warranty does not cover shipping or transportation costs. Warranty applies to original purchaser only. Proof of date of purchase is required. Warranty is void if registration card is not mailed within 30 days of purchase or delivery. Warranty does not cover abuse, accidents, acts of war, droppage, improper voltage, disassembly, repair or service by anyone other than Double K Industries or Double K authorized service by anyone other than Double K Industries or a Double K service center will void the warranty.